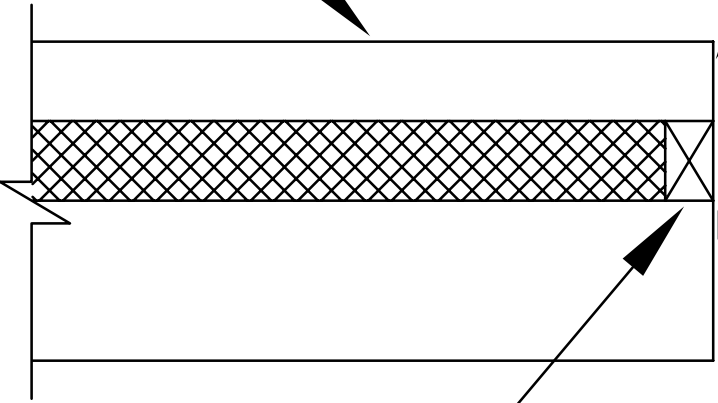


Form Face Architectural finish
Sandblast, Acid Etch, or Retard
& Wash

Finish Edge Sandblast, or
Smooth at Frame Conditions



Frame by Others

2 by wood nailer

If opening in panels are to be left as "concrete" finish or left untrimmed, painting contractor shall "knife and spackle" returns at openings prior to painting. (ADD NOTE TO PAINTING SPECIFICATION)