

Double Tee Design Guide



Table of Contents

- 3** Common uses for double tees
- 4** Common tee sections
- 8** Composite section options
- 9** Sound transmission
- 10** Determining the fire rating
- 12** Penetrations & fastenings
- 13** Recommended connection details
- 16** Connection of other materials

Common Uses for Double Tees

Double tees are precast structural members with efficient sections typically used as framing to achieve long spans. Consisting of two beam elements and a flat deck, double tees are used for a variety of building types — from highly loaded structures with assembly or storage loads to lightly loaded roofs with over 100 ft spans. The prestressing steel incorporated during manufacturing of the double tee results in increased durability and longevity over the lifetime of the structure.

Natatoriums



Gymnasiums



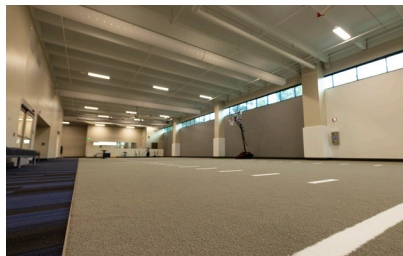
Auditoriums



Offices



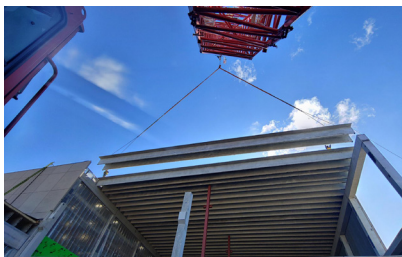
Medical



Parking



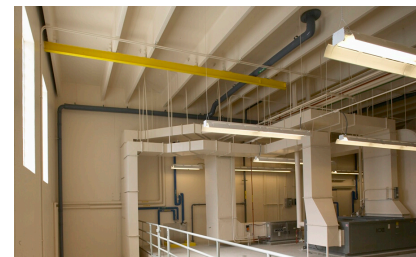
Manufacturing



Food Processing



WWTP / WTP



Fire Stations



Data Centers



Livestock





Common Double Tee Sections

The design information below is intended to introduce designers to a range of common applications of double tees. The spans, building types and loads below can vary widely beyond the listed values. Additional double tee sections exist and can be selected with with proper coordination with Wells Engineering and Sales teams.

Each double tee capacity is determined based on length and thickness of the tee. Contact your local sales rep for exact cross sections used in your project area.

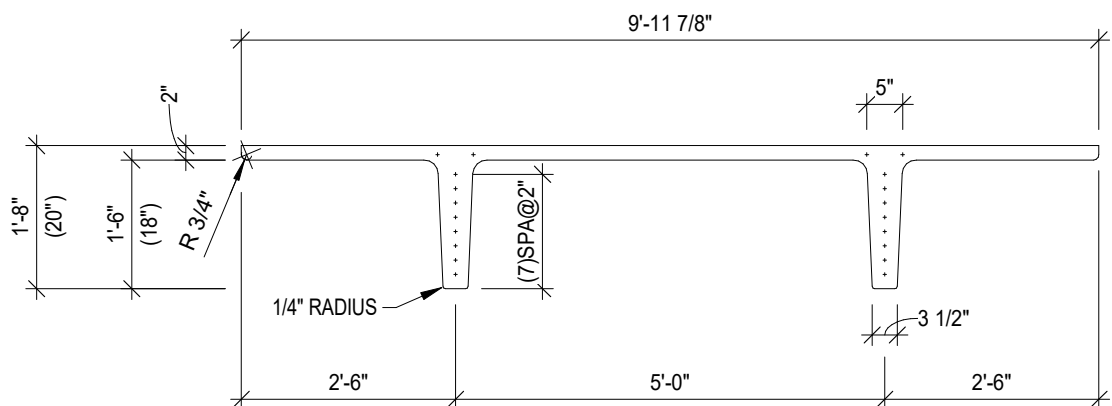
20" Deep x 10'-0" Wide Nominal

5.5.7.2 DT210 (DT1, DT10)

Section Properties

Area	395 in ²
I.....	12,530 in ⁴
Yb.....	15.33 in
Yt.....	4.67 in
Sb.....	817 in ³
St.....	2683 in ³
Vol./Surf.....	1.28 in
DL.....	42.5 psf
Weight 155pcf.....	425 plf

Design Information	Office Loading	Parking Garage Loading	Roof Loading
Superimposed dead load (psf ⁴)	15	5	15
Live load (psf ⁴)	100	55 ²	30
Topping thickness ³ (inches)	4	3	0
Span ¹ (feet)	37	45	50
Note 1: Actual maximum span can be adjusted based on a number of considerations, contact Wells for more information			
Note 2: 55 psf accounts for combination case of 30 psf snow and 40 psf live			
Note 3: Tees can also be pretopped and all subsequent loads/spans do not change			
Note 4: psf stands for "pounds per square foot"			



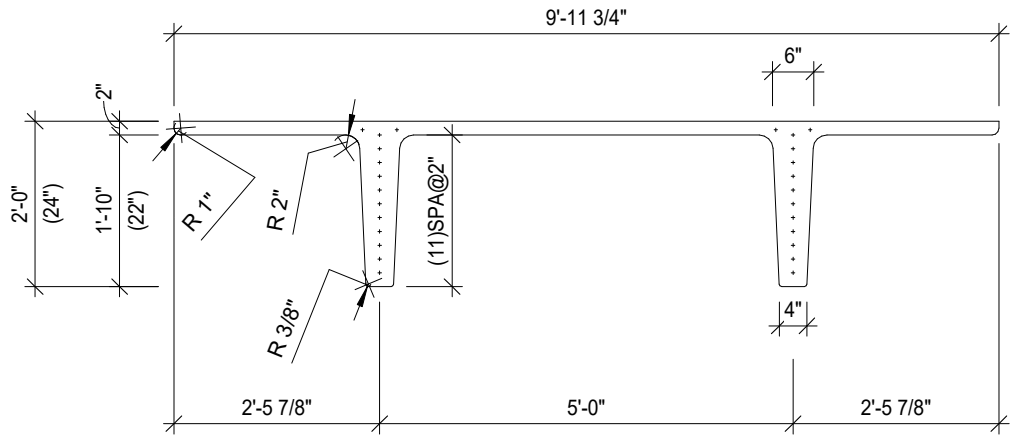
24" Deep x 10'-0" Wide Nominal

5.5.7.3 DT2410 (DT2, DT3, DT4, DT8)

Section Properties

Area	461 in ²
I.....	23,370 in ⁴
Yb.....	17.62 in
Yt.....	6.38 in
Sb.....	1326 in ³
St.....	3663 in ³
Vol./Surf.....	1.43 in
DL 155pcf.....	49.6 psf
Weight 155pcf.....	496 plf
DL 135pcf.....	43.2 psf
Weight 135pcf.....	432 plf
DL 120pcf.....	38.4 psf
Weight 120pcf.....	384 plf

Design Information	Office Loading	Parking Garage Loading	Roof Loading
Superimposed dead load (psf ¹)	15	5	15
Live load (psf ¹)	100	55 ²	30
Topping thickness ³ (inches)	4	3	0
Span ¹ (feet)	50	60	65
Note 1: Actual maximum span can be adjusted based on a number of considerations, contact Wells for more information			
Note 2: 55 psf accounts for combination case of 30 psf snow and 40 psf live			
Note 3: Tees can also be pretopped and all subsequent loads/spans do not change			
Note 4: psf stands for "pounds per square foot"			



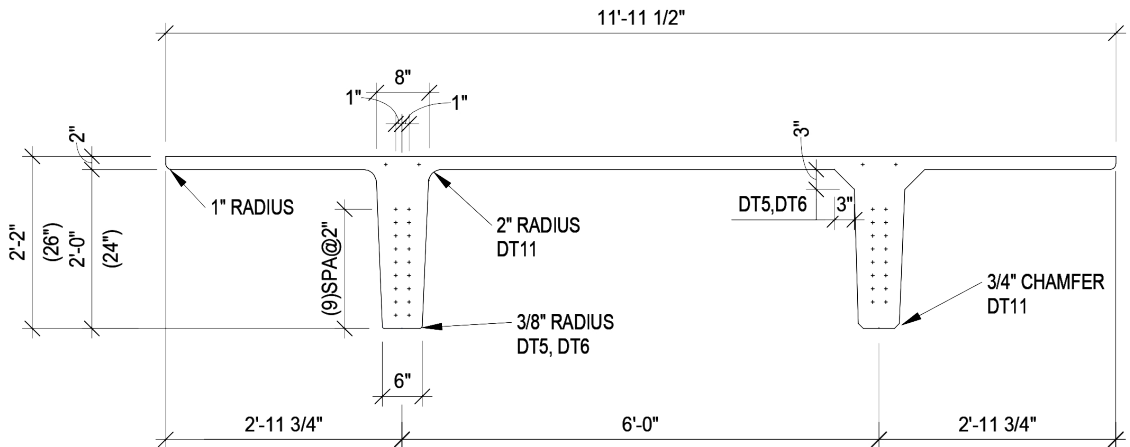
26" Deep x 12'-0" Wide Nominal

5.5.7.4 DT2612 (DT5, DT7, DT11)

Section Properties

Area	640 in ²
I.....	40,346 in ⁴
Yb.....	18.42 in
Yt.....	7.58 in
Sb.....	2190 in ³
St.....	5323 in ³
Vol./Surf.....	1.71 in
DL.....	57.4 psf
Weight 155pcf.....	689 plf

Design Information	Office Loading	Parking Garage Loading	Roof Loading
Superimposed dead load (psf ¹)	15	5	15
Live load (psf ¹)	100	55 ²	30
Topping thickness ³ (inches)	4	3	0
Span ¹ (feet)	50	60	65
Note 1: Actual maximum span can be adjusted based on a number of considerations, contact Wells for more information			
Note 2: 55 psf accounts for combination case of 30 psf snow and 40 psf live			
Note 3: Tees can also be pretopped and all subsequent loads/spans do not change			
Note 4: psf stands for "pounds per square foot"			



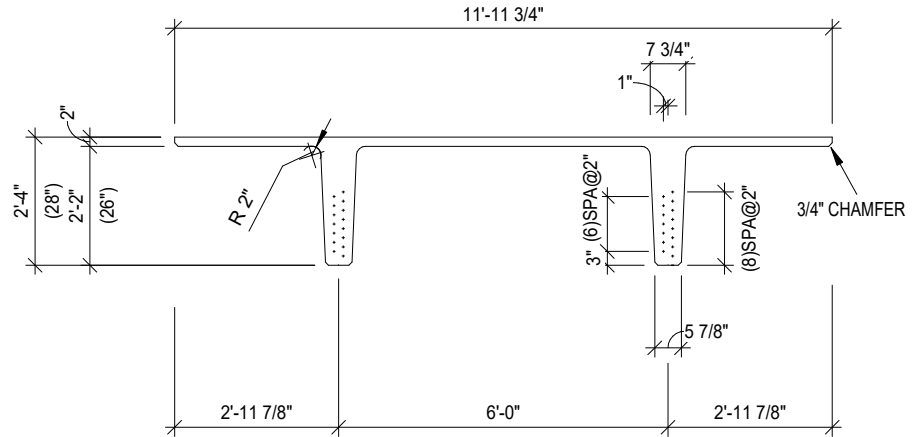
28" Deep x 12'-0" Wide Nominal

5.5.7.5 DT2812 (E-2)

Section Properties

Area	641.8 in ²
I.....	48,348 in ⁴
Yb.....	19.6 in
Yt.....	8.4 in
Sb.....	2,471 in ³
St.....	5,767 in ³
DL.....	57.5 psf
Weight 155pcf.....	690.8 plf

Design Information	Office Loading	Parking Garage Loading	Roof Loading
Superimposed dead load (psf ¹)	15	5	15
Live load (psf ²)	100	55 ²	30
Topping thickness ³ (inches)	4	3	0
Span ¹ (feet)	52	63	70
Note 1: Actual maximum span can be adjusted based on a number of considerations, contact Wells for more information			
Note 2: 55 psf accounts for combination case of 30 psf snow and 40 psf live			
Note 3: Tees can also be pretopped and all subsequent loads/spans do not change			
Note 4: psf stands for "pounds per square foot"			



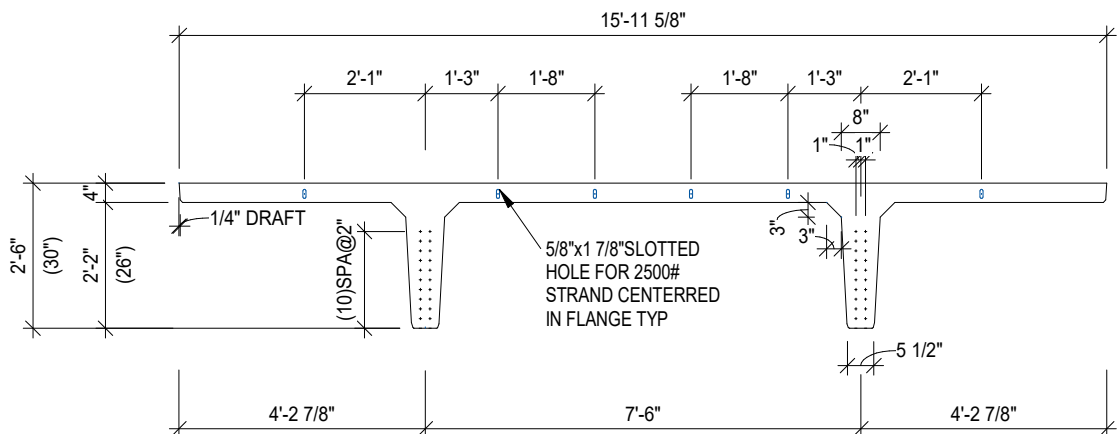
30" Deep x 16'-0" Wide Nominal

5.5.7.6 DT6016 (E-2)

Section Properties

Area	1,118 in ²
I.....	69,108 in ⁴
Yb.....	23.54 in
Yt.....	6.46 in
Sb.....	2,915 in ³
St.....	10,702 in ³
DL.....	75.2 psf
Weight 155pcf.....	1,118 plf

Design Information	Office Loading	Parking Garage Loading	Roof Loading
Superimposed dead load (psf ¹)	15	5	15
Live load (psf ²)	100	55 ²	30
Span ¹ (feet)	45	60	67
Note 1: Actual maximum span can be adjusted based on a number of considerations, contact Wells for more information			
Note 2: 55 psf accounts for combination case of 30 psf snow and 40 psf live			
Note 3: psf stands for "pounds per square foot"			



Note: This is an example of a pretopped double tee, and the flange thickness can be increased to achieve a desired fire rating as needed.

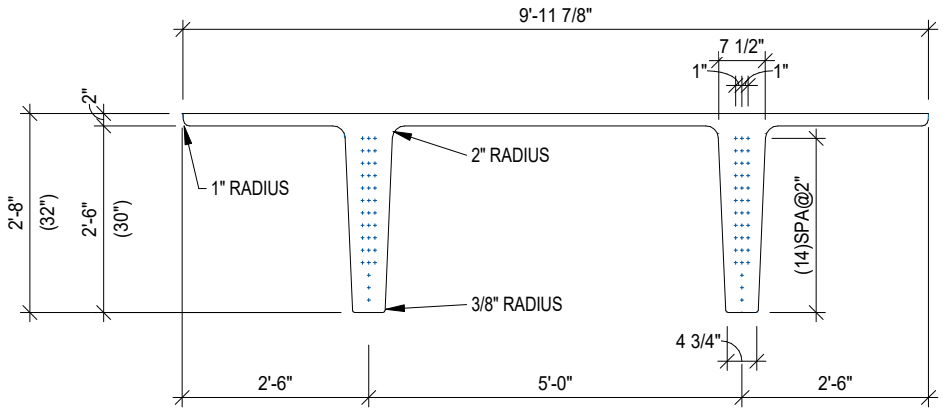
32" Wide x 10'0" Deep Nominal

5.5.7.7 DT3210 (DT4, DT16, DT9)

Section Properties

Area	609 in ²
I.....	59,354 in ⁴
Yb.....	22.03 in
Yt.....	9.98 in
Sb.....	2695 in ³
St.....	5948 in ³
Vol./Surf.....	1.72 in
DL.....	65.6 psf
Weight 155pcf.....	656 plf

Design Information	Office Loading	Parking Garage Loading	Roof Loading
Superimposed dead load (psf ¹)	15	5	15
Live load (psf ¹)	100	55 ²	30
Topping thickness ³ (inches)	4	3	0
Span ¹ (feet)	60 ²	70	85
Note 1: Actual maximum span can be adjusted based on a number of considerations, contact Wells for more information			
Note 2: Vibration should be considered in this application			
Note 3: Tees can also be pretopped and all subsequent loads/spans do not change			
Note 4: psf stands for "pounds per square foot"			



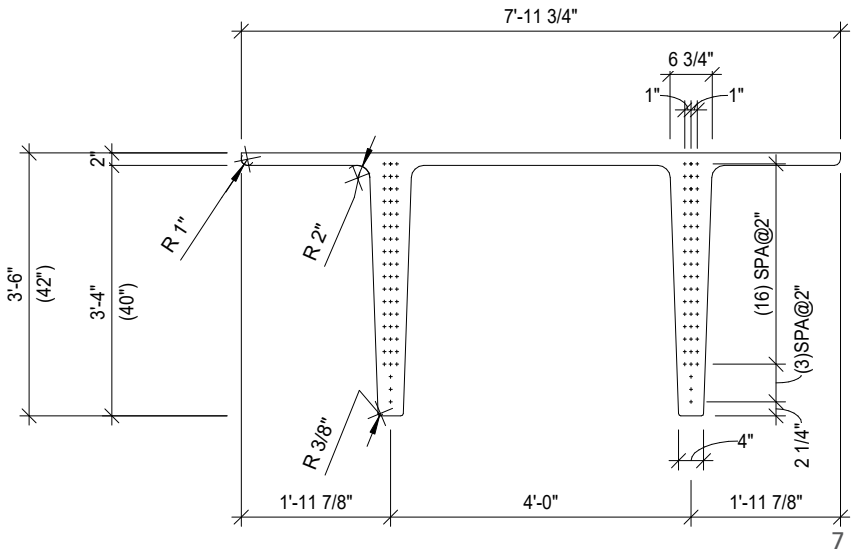
42" Deep x 8'-0" Wide Nominal

5.5.7.8 DT4208 (DT9)

Section Properties

Area	624 in ²
I.....	105,687 in ⁴
Yb.....	27.70 in
Yt.....	14.31 in
Sb.....	3817 in ³
St.....	7388 in ³
Vol./Surf.....	1.81 in
Weight 155pcf.....	671 plf
DL 155 pcf.....	83.9 psf
Weight 135pcf.....	584 plf
DL 135 pcf.....	73.1 psf
Weight 120pcf.....	520 plf
DL 120pcf.....	65 psf

Design Information	Office Loading ²	Parking Garage Loading ²	Roof Loading
Superimposed dead load (psf ¹)	15	5	15
Live load (psf ¹)	100	55 ²	30
Topping thickness ³ (inches)	4	3	0
Span ¹ (feet)	75	90	105
Note 1: Actual maximum span can be adjusted based on a number of considerations, contact Wells for more information			
Note 2: If you wish to use this member size in these structures, contact Wells for more information			
Note 3: Tees can also be pretopped and all subsequent loads/spans do not change			
Note 4: psf stands for "pounds per square foot"			





Composite Section Options

Field-topped

In many areas throughout the country it is common to cast the double tee in a precast manufacturing facility and then apply a post-pour topping once it is erected at the job site. The top flange of the member is produced with a thickness between 2 to 3 inches. A roughened surface is provided at the interface of the top deck surface and the cast in place topping.

Once the topping cures it increases the overall performance and strength of the double tee. Control joints are also placed in the topping at the joint between members. Topping is usually used as a leveling compound to mitigate the effect of camber.

Pre-topped

The other option is to simply cast a thickened flange when producing the double tee. This eliminates a significant amount of coordination time needed in post-pour applications. In cold weather climates in particular this option offers cost benefits and a more efficient build. The performance of the double tee is similar to the post-pour method and is easily accommodated in the design of the tee. Pre-topped systems are based on weight limitations, and for longer span double tees, pre-topped may not be the best solution due to weight and length.



Sound Transmission

Often, acoustical control is specified as to the minimum insulation values of the dividing partition system. Local building codes, lending institutions, and the Department of Housing and Urban Development (HUD) list both airborne STC and impact IIC values for different living environments. For example, the HUD recommendations are given in Table 11.2.2.

Table 11.2.2 HUD recommendations for sound transmission class (STC) and impact insulation class (IIC)

Location	STC	IIC
Between living units	45	45
Between living units and public space	50	50

Other community ordinances are more specific, listing the sound insulation criteria with relation to particular ambient environments.

Once the objectives are established, the designer should refer to available data, for example, Table 11.2.4, and select the system that best meets these requirements. In this respect, concrete systems have superior properties and can, with minimal effort, comply with these criteria.

PCI Design Handbook (8th Edition)

Table 11.2.4 Airborne sound transmission class (STC) and impact insulation class (IIC) ratings from tests of precast concrete assemblies

Assembly	Description	STC	IIC
Floor-ceiling systems			
20	5-in.-thick flat slabs, 60 lb/ft ²	52 ^a	24
21	5-in.-thick flat slab concrete with carpet and pad, 61 lb/ft ²	52 ^a	68
22	6-in.-thick flat slabs, 75 lb/ft ²	55	34



Determining the Fire Rating

The fire rating of double tees is established based on two principles. The overall flange thickness must be established and sufficient concrete cover must be provided around the prestressed strand.

Flange Thickness

The thickness of the double tee deck (floor surface) is chosen in a similar fashion to wall panels or flat slabs. Table 720.1(3) is shown on the next page as defined in the IBC. Aggregate type has a significant impact on the overall rating of the deck and can vary by region.

Concrete Cover

The protection of the prestressed strand within the concrete also impacts the overall fire rating of the member. In the event of a fire, steel reinforcing has a tendency to lose strength through relaxation when subjected to rising temperatures. The concrete acts as an insulator to delay this relaxation, and double tees can be designed to provide an average cover for strand that satisfies the fire rating for the structure. Table 720.1(1) from the IBC is shown on the next page. Note that this specified cover distance relates to the centroid of all the strands in a double tee stem, not the bottom-most strand.



Precast concrete offers exceptional fire resistance as opposed to wood building materials, providing critical protection by maintaining structural integrity and preventing the spread of flames, making it a reliable choice for safety in building design.

Procedure for Determining Fire Rating

Fire Separation (flange thickness):

1. Table 720.1(3) International Building Code, Item #1 – Siliceous Aggregate 1.1.1 – Slabs

Use the below table to figure out how thick the composite slab must be for a given fire rating.

**TABLE 720.1 (3)
MINIMUM PROTECTION FOR FLOOR AND ROOF SYSTEMS^{a,q}**

FLOOR OR ROOF CONSTRUCTION	ITEM NUMBER	CEILING CONSTRUCTION	THICKNESS OF FLOOR OR ROOF SLAB (inches)				MINIMUM THICKNESS OF CEILING (inches)			
			4 hour	3 hour	2 hour	1 hour	4 hour	3 hour	2 hour	1 hour
1. Siliceous aggregate concrete	1-1.1	Slab (no ceiling required). Minimum cover over nonprestressed reinforcement shall not be less than $\frac{3}{4}$ " b.	7.0	6.2	5.0	3.5	-	-	-	-
2. Carbonate aggregate concrete	2-1.1		6.6	5.7	4.6	3.2	-	-	-	-
3. Sand-lightweight concrete	3-1.1		5.4	4.6	3.8	2.7	-	-	-	-
4. Lightweight concrete	4-1.1		5.1	4.4	3.6	2.5	-	-	-	-

Fire Endurance (steel protection):

1. Table 720.1(1) International Building Code, Item #3 – 3-1.1 – Bonded Prestensioned Beam

Use the below table to figure out how much cover on strand there needs to be for given rating. Note that the cover is at the centroid of all the strands, not at the bottom-most strand.

**TABLE 720.1 (1)--continued
MINIMUM PROTECTION OF STRUCTURAL PARTS BASED ON TIME PERIODS
FOR VARIOUS NONCOMBUSTIBLE INSULATING MATERIALS^m**

STRUCTURAL PARTS TO BE PROTECTED	ITEM NUMBER	INSULATING MATERIAL USED	MINIMUM THICKNESS OF INSULATING MATERIAL FOR THE FOLLOWING FIRE-RESISTANCE PERIODS (inches)			
			4 hour	3 hour	2 hour	1 hour
		DESCRIBED ABOVE.				
3. Bonded pretensioned reinforcement in prestressed concrete ^e	3-1.1	Carbonate, lightweight, sand-lightweight and siliceous ^f aggregate concrete Beams or girders	4 ^g	3 ^g	2 ^{1/2}	1 ^{1/2}
		Solid slabs ^h		2	1 ^{1/2}	1

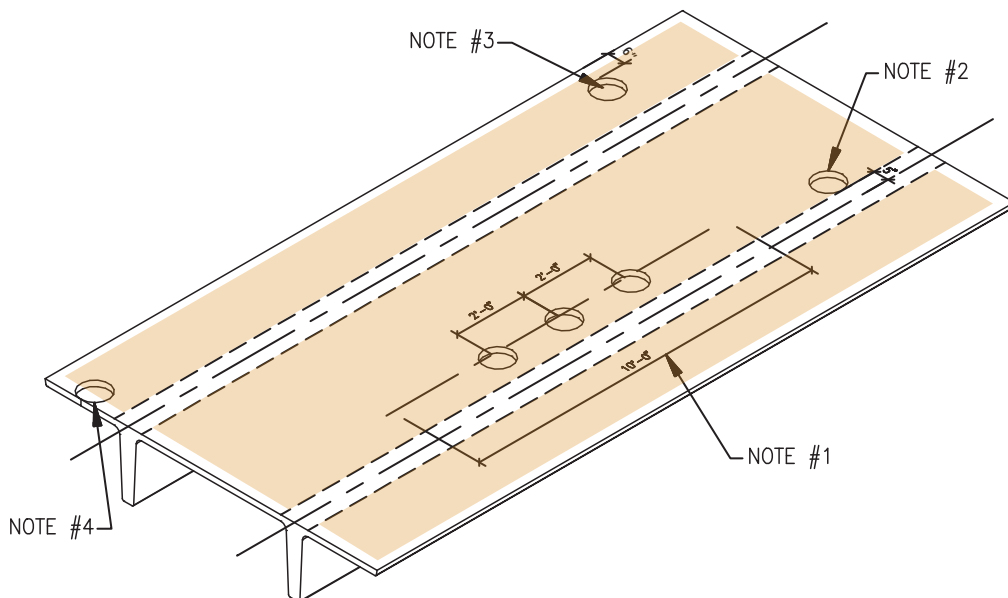
Penetrations & Fastenings

What to consider

Double tees provide a lot of flexibility with penetrations and fastening, and it is common and acceptable to have large openings in the stems, per shaded regions in the graphic below. The guidelines on this page are intended to provide a rule of thumb for locating openings, and you can contact Wells to coordinate unique conditions. Also reference the Design Handbook on the Wells website for more information.

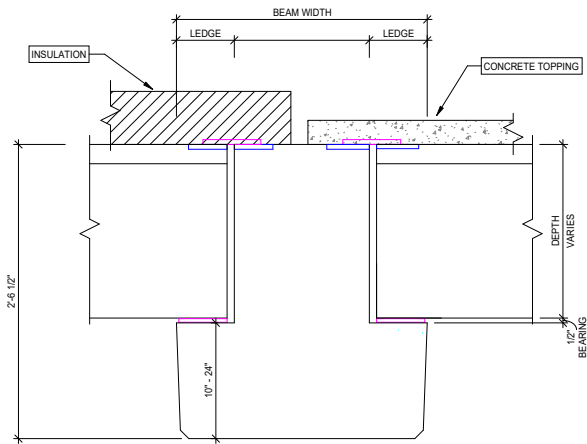
Fastening & cored holes criteria

1. No more than 3 holes in 10 ft in the same line, and not less than 2'- 0" on center between them.
2. Edge of holes cannot be closer than 5" from edge of hole to center of DT leg.
3. Edge of holes must be at least 6" away from edge of DT flange along the edges parallel to legs.
4. Edge of holes could be flush with edge of flange at the ends of DT.
5. Cores must be at least 1'- 0" away in any direction from any type of connection (tee to tee, tee to wall or spandrel, tee to beam).
6. See diagram below for anchors & fasteners in DT stems (legs).
 - 1/8" x 1" low velocity powder activated fasteners may be placed in shaded areas only.
 - Drilled-in-anchors in double tee legs in shaded area only.
7. Cored holes with $\text{Ø} > 8"$ coordinate with Wells.
8. Cored holes with spacing less than 2 times the diameter of the hole coordinate with Wells.

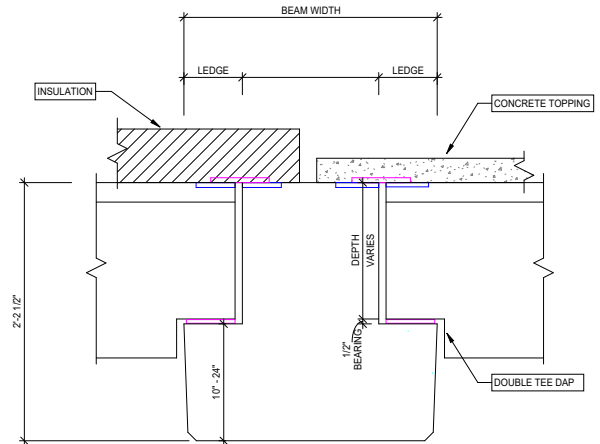


Recommended Connection Details

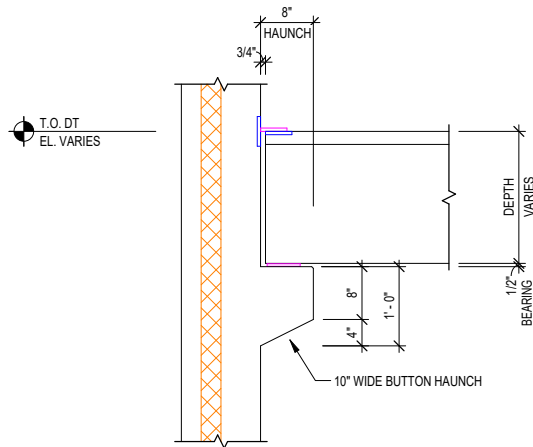
Double tee bearing at beam



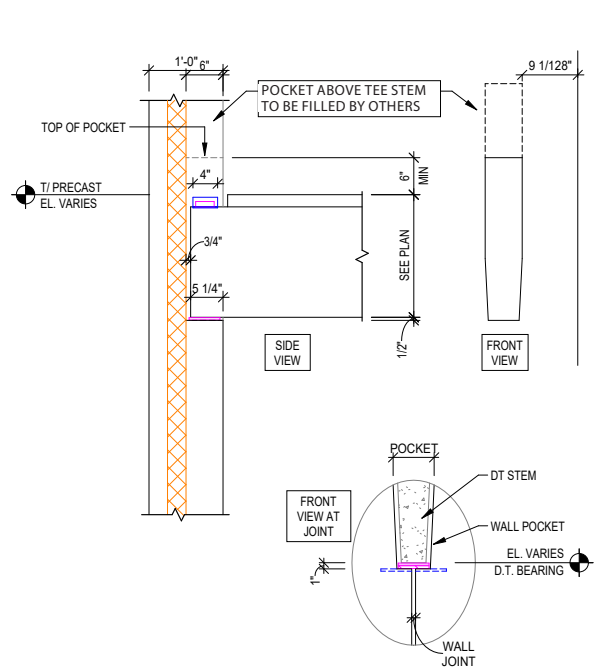
Double tee dap bearing at beam



Double tee bearing at wall haunch

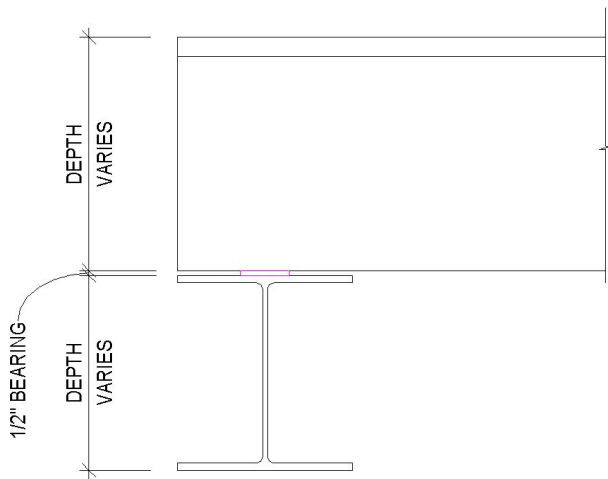


Double tee bearing at wall pocket

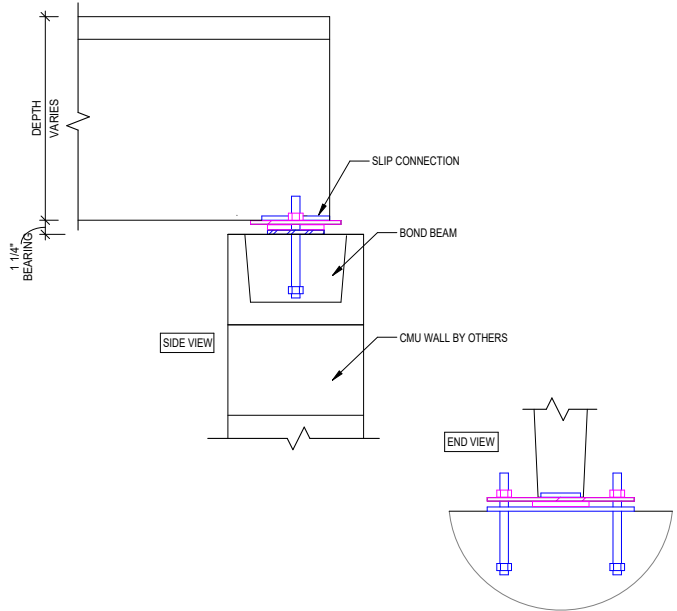


Recommended Connection Details

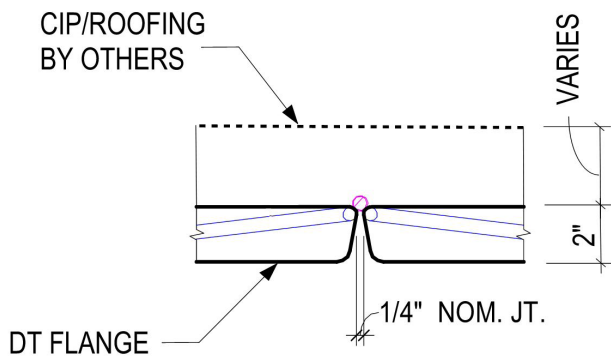
Double tee bearing at steel beam



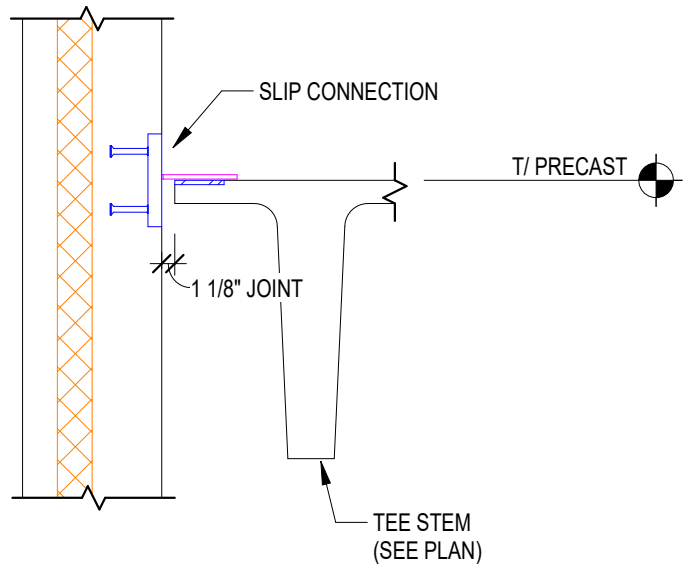
Double tee bearing at CMU wall slip



Double tee flange to flange connection

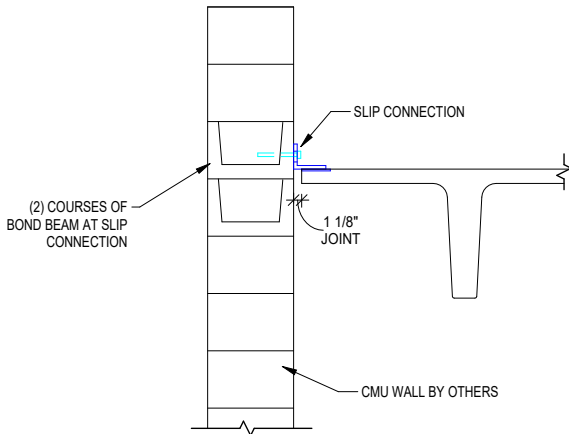


Double tee flange to wall slip

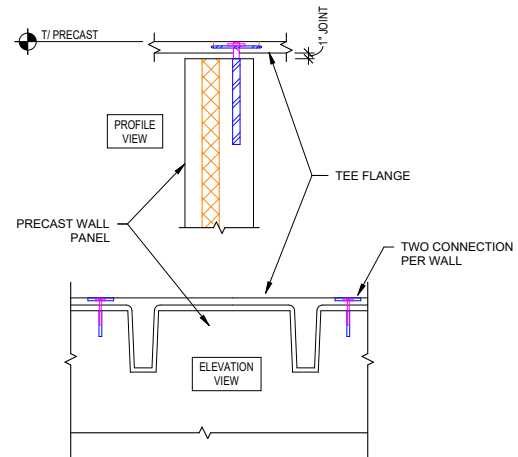


Recommended Connection Details

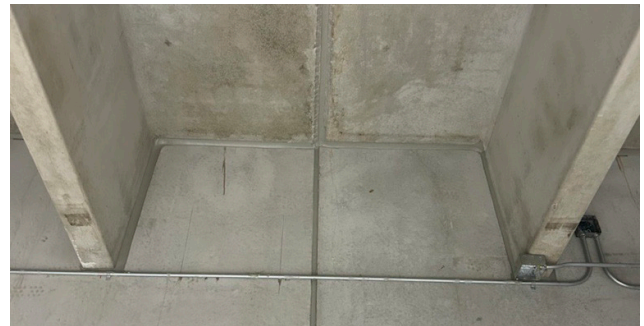
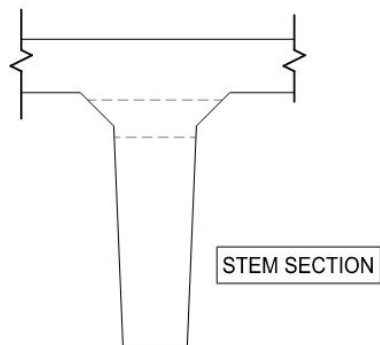
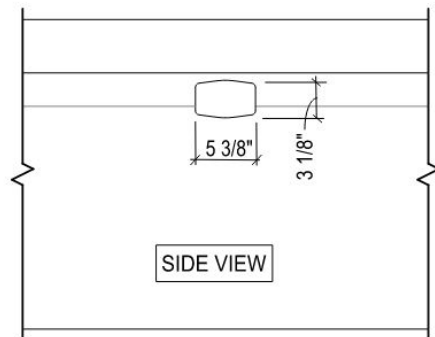
Flange to CMU slip



Flange to wall



Stem insert for mechanical conduit



Sealants

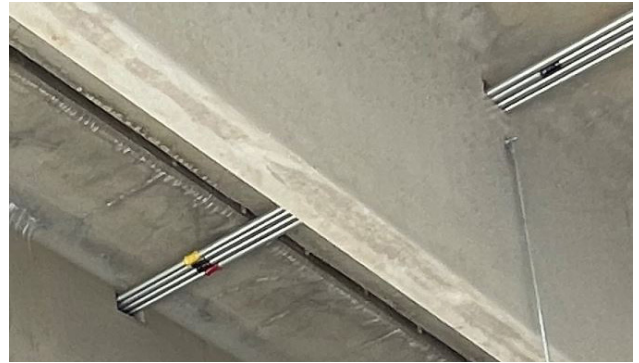
Properly sealing and maintaining double tee joints is important to creating an overall structure that will last. Caulking between joints and pockets can be provided to mitigate undesirable moisture infiltration.

Recommended Connection of Other Material



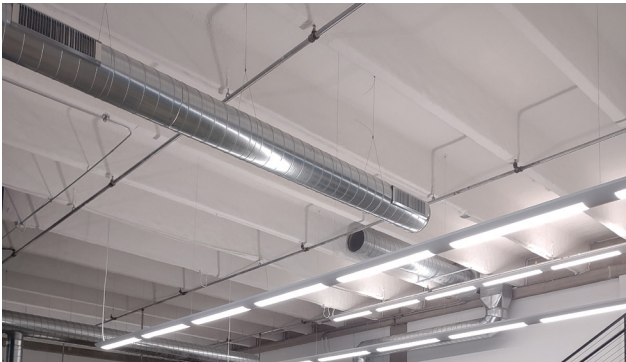
Unistrut

It is common to utilize Unistrut in the bottom of double tee stems. They can be used for ceiling support grids, piping, conduit, partition walls and many other applications. The unistrut is coordinated and can be cast in to the tee stem during the production process.



Electrical block-outs

Standard sizes exist for electrical blockouts that are cast into double tee stems. They are useful for routing conduit below the bottom surface of the deck.



Pipe sleeves

Mechanical coordination is a very important aspect of the coordination process for a project. Piping can be easily attached to the underside of the deck with expansion anchors.



Expansion anchors and concrete screws

The anchors themselves are custom to the customer's needs and loading considerations. We recommend that if heavier loading is required that a steel embed plate be utilized instead.

Advantages of Double Tees over Steel Roof Systems

Clean Ceilings

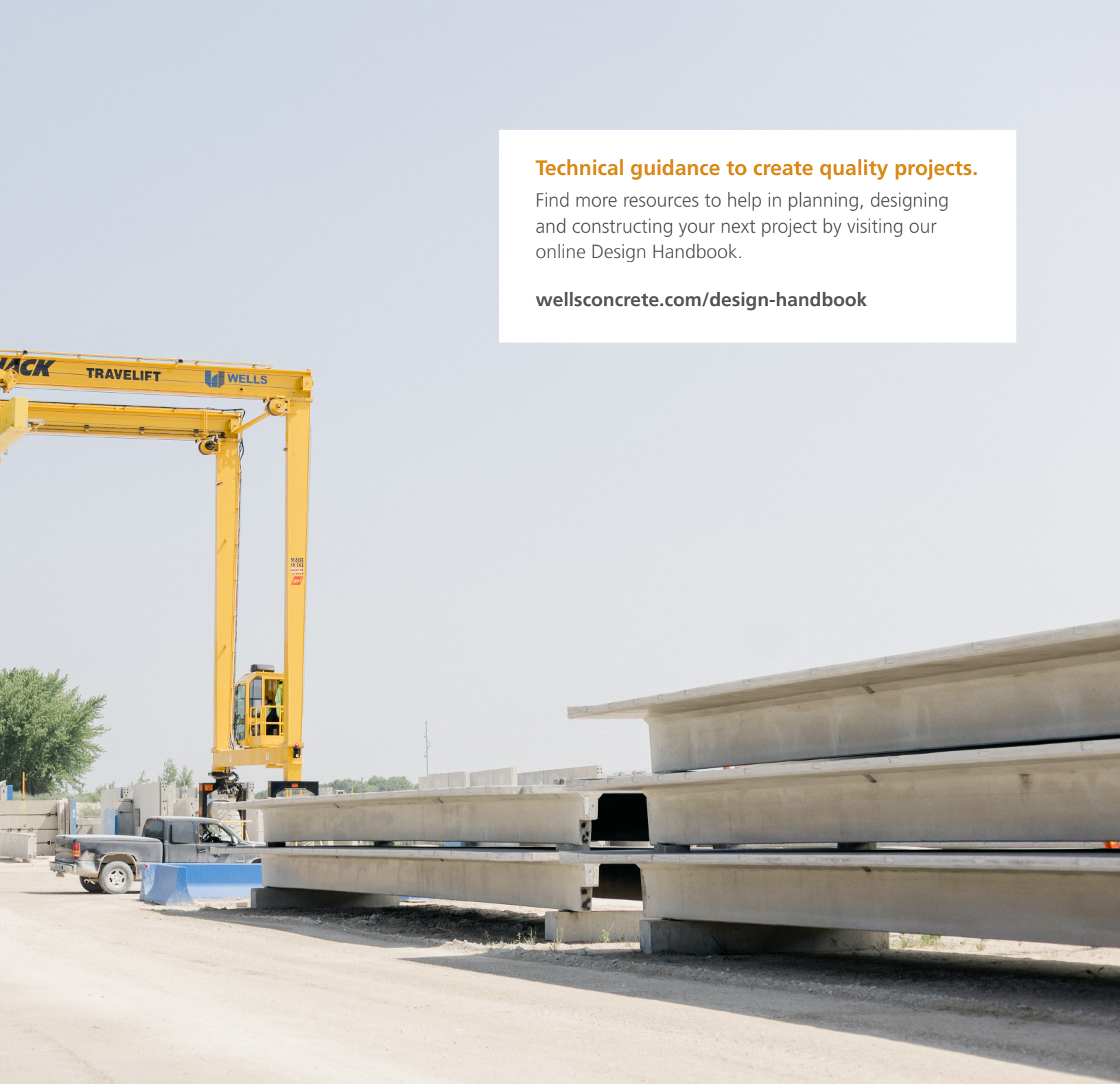
The ledge-free surfaces of a double tee ceiling avoid the build-up of dust and debris present with steel ceiling structures, resulting in a cleaner aesthetic over the project's lifetime and better air quality for occupants.

Lower Profile

Double tees can achieve half the depth of steel ceiling structures on long spans, providing more clearance for the ability to integrate electrical ductwork.

Firewall Cost Savings

When designing a building as a total precast system, the use of double tees reduces the need for firewalls, saving projects time and money.



Technical guidance to create quality projects.

Find more resources to help in planning, designing and constructing your next project by visiting our online Design Handbook.

wellsconcrete.com/design-handbook



Our building solution experts are here to help you achieve your vision.

wellsconcrete.com
800.658.7049

©2025 The Wells Companies, Inc